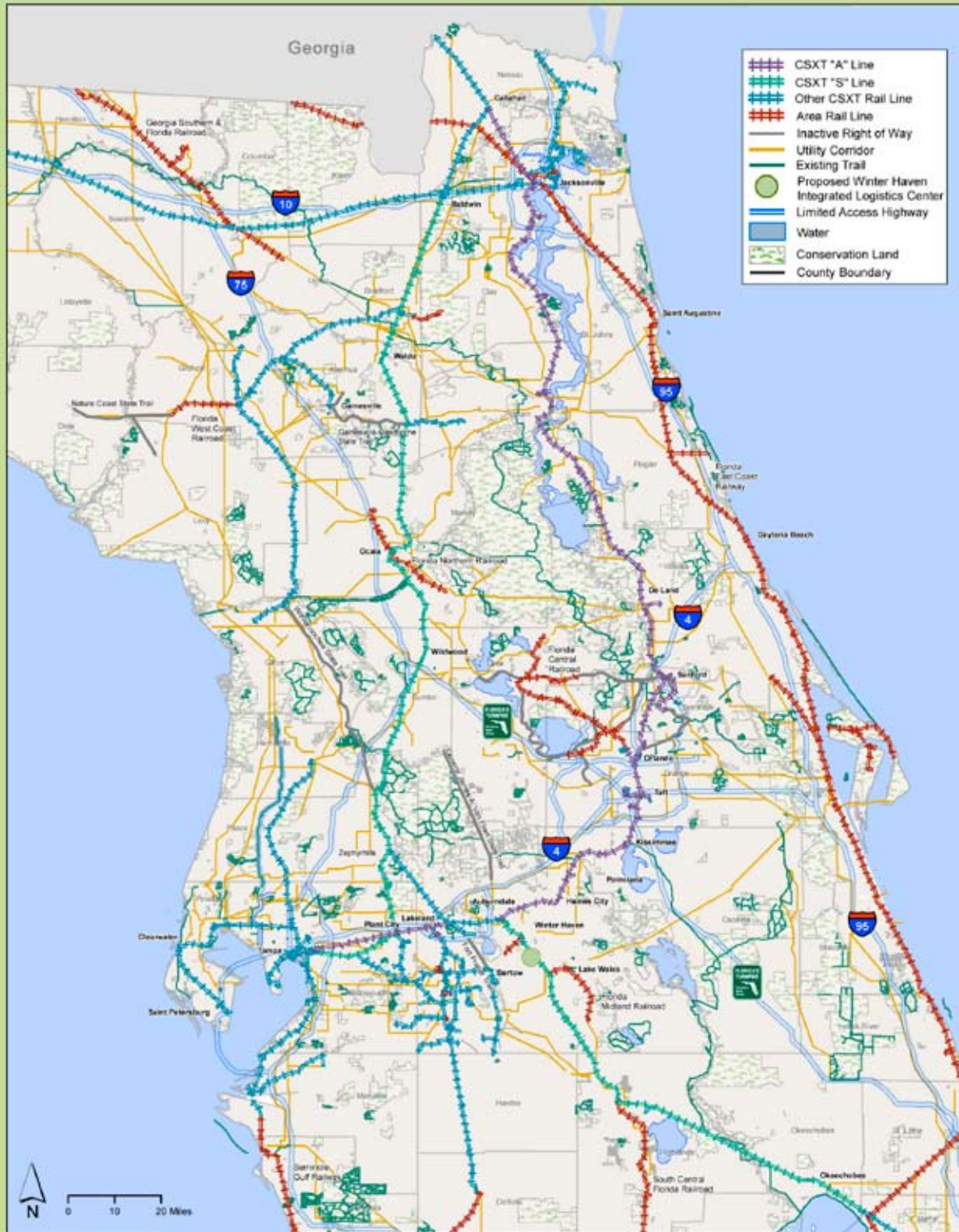


# Regional Corridors Map



Source: National Rail Network Bureau of Transportation Statistics; FDOT, FDEP, ESRI Data

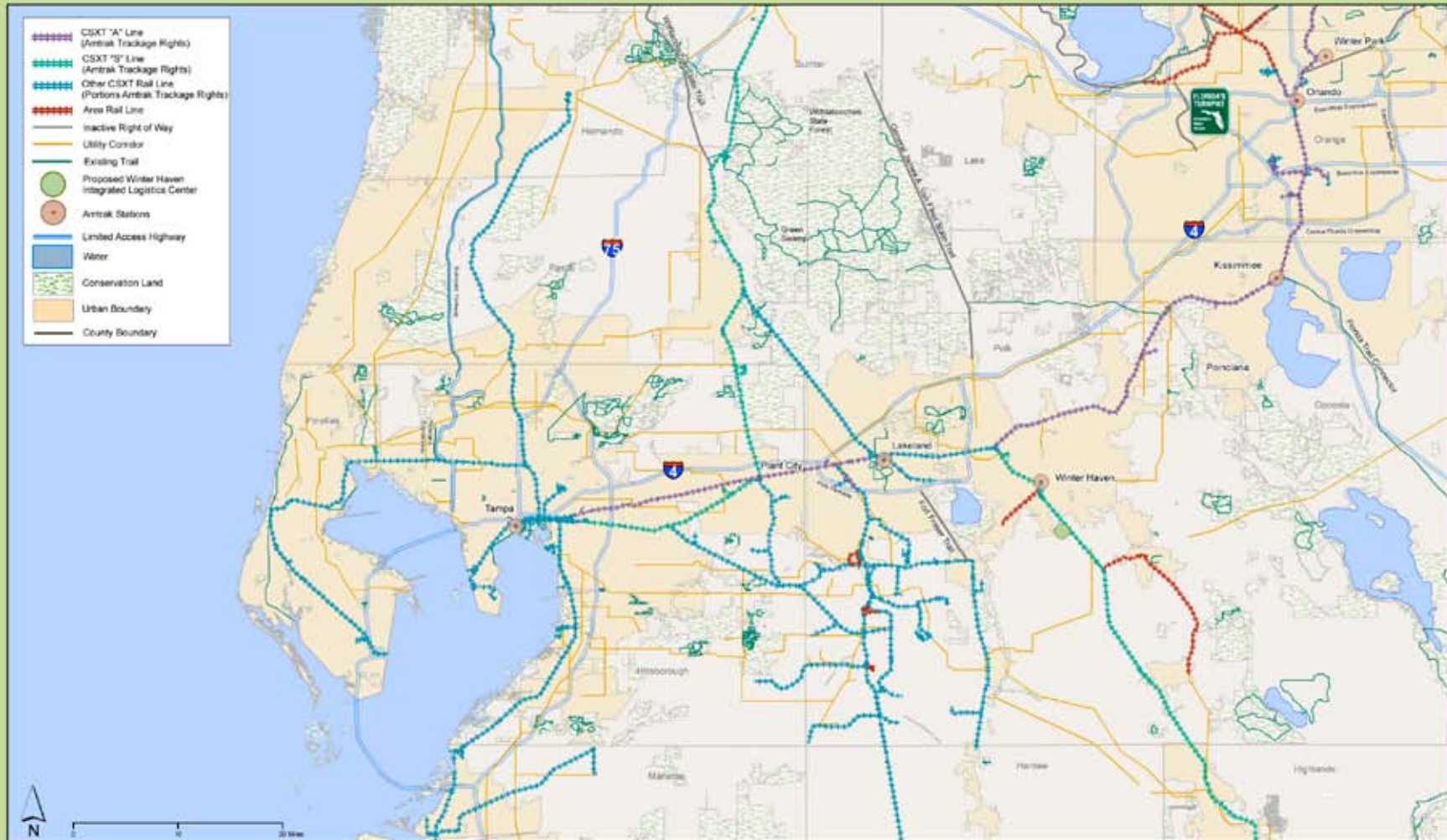


# Winter Haven/Lake Wales Area Grade Crossing



Source: FDOT, Polk TPO, ESRI Data

# Regional Corridors Map Orlando to Tampa



Source: National Rail Network Bureau of Transportation Statistics; FDOT; FDEP; ESRI Data

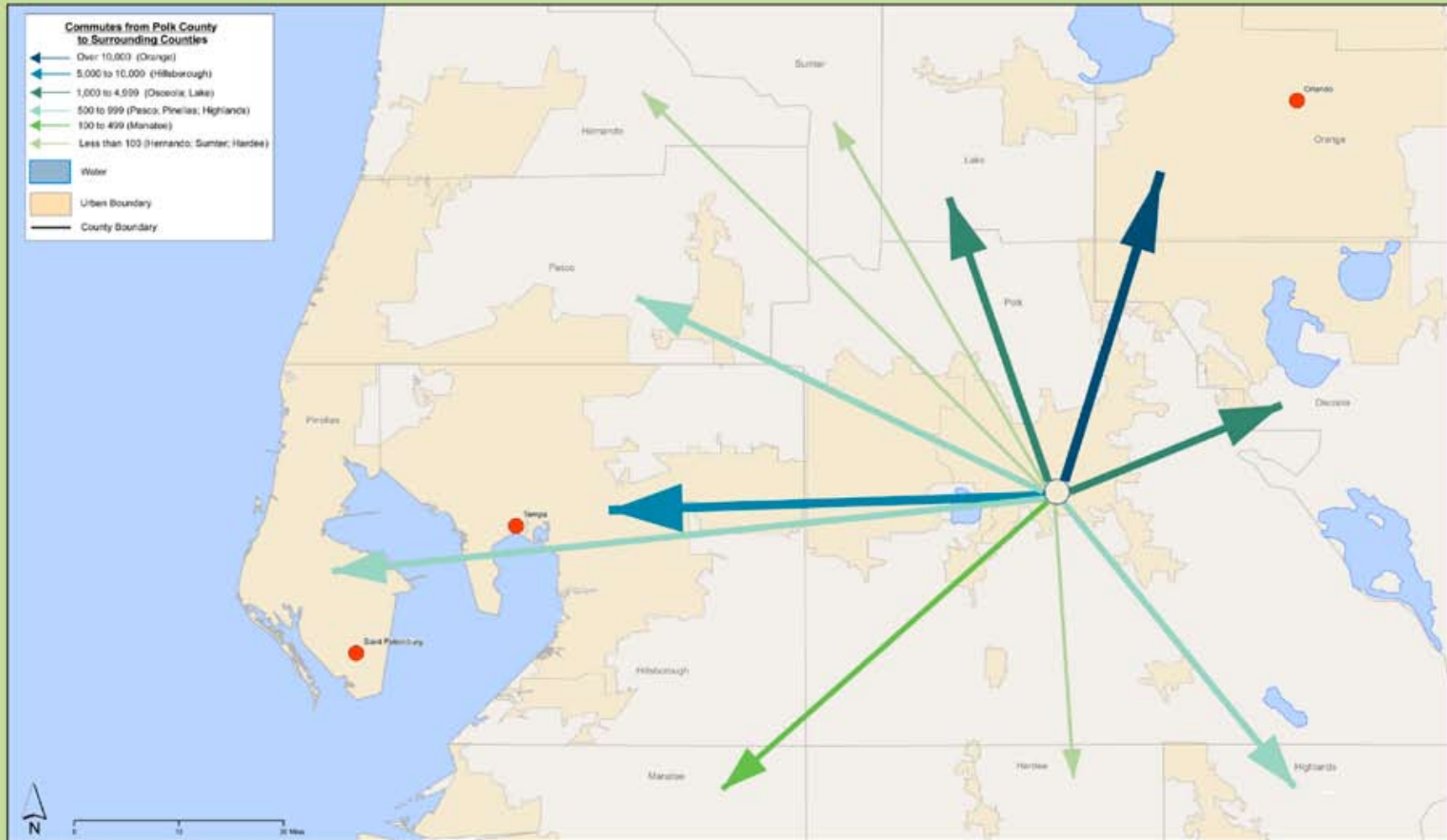
FDOT Rail Traffic Evaluation  
July 2008



Florida Department of Transportation

# Regional Corridors Map

## Polk County Commuter Flow



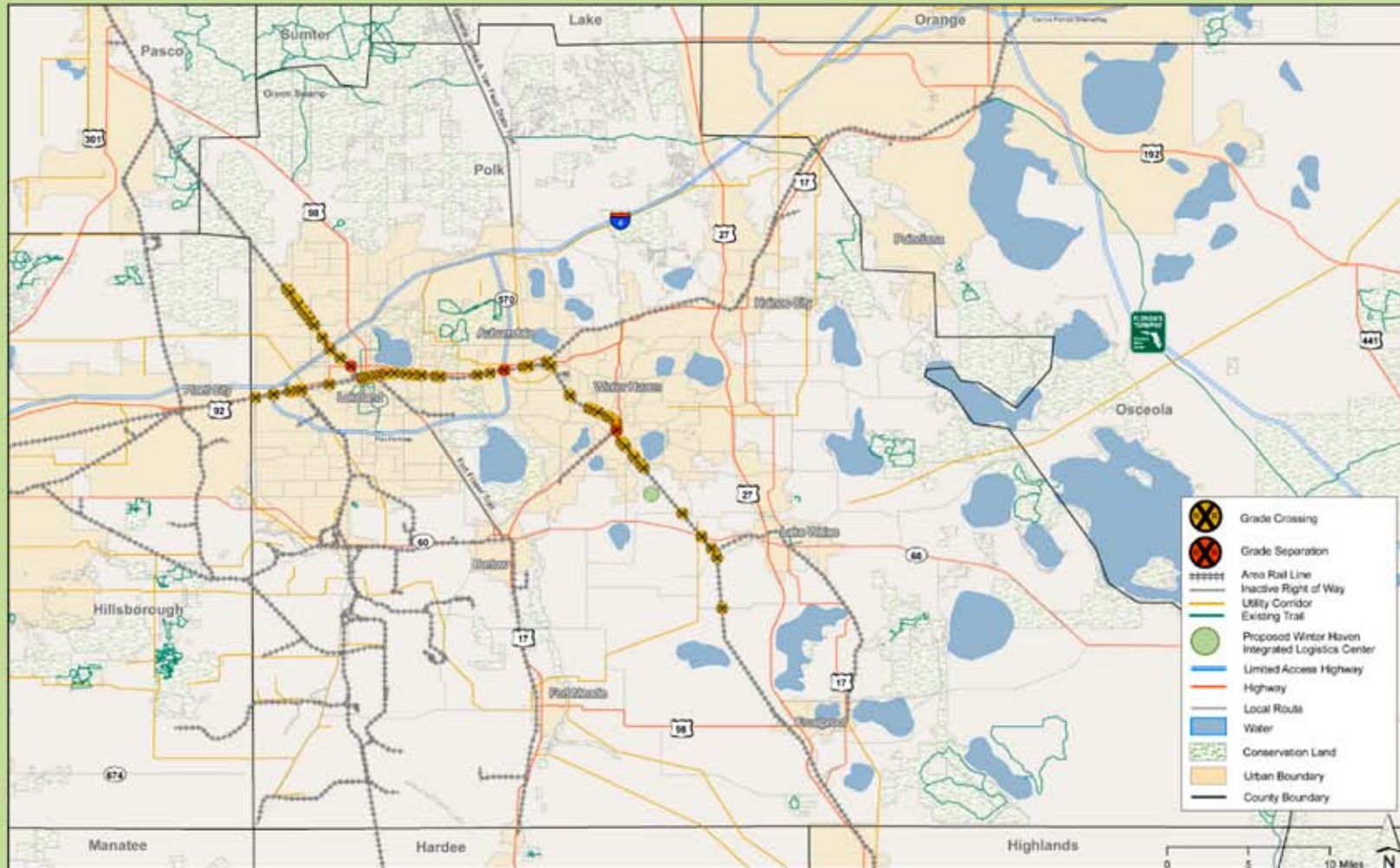
Source: Census Transportation Planning Package 2000; ESRI Data

FDOT Rail Traffic Evaluation  
July 2008



# Study Area

## Grade Crossing Overview

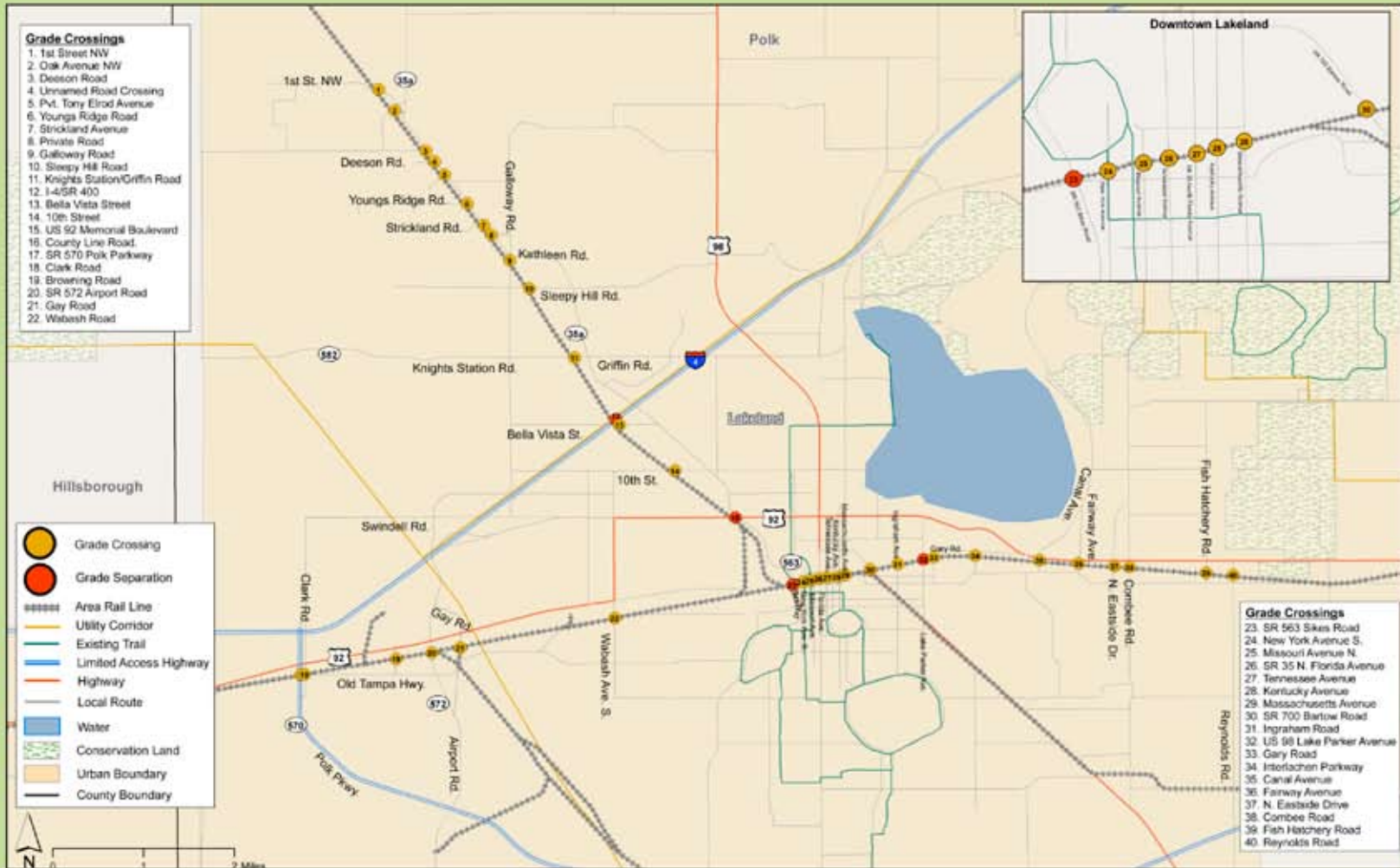


Source: FDOT, Polk TPO, ESRI Data

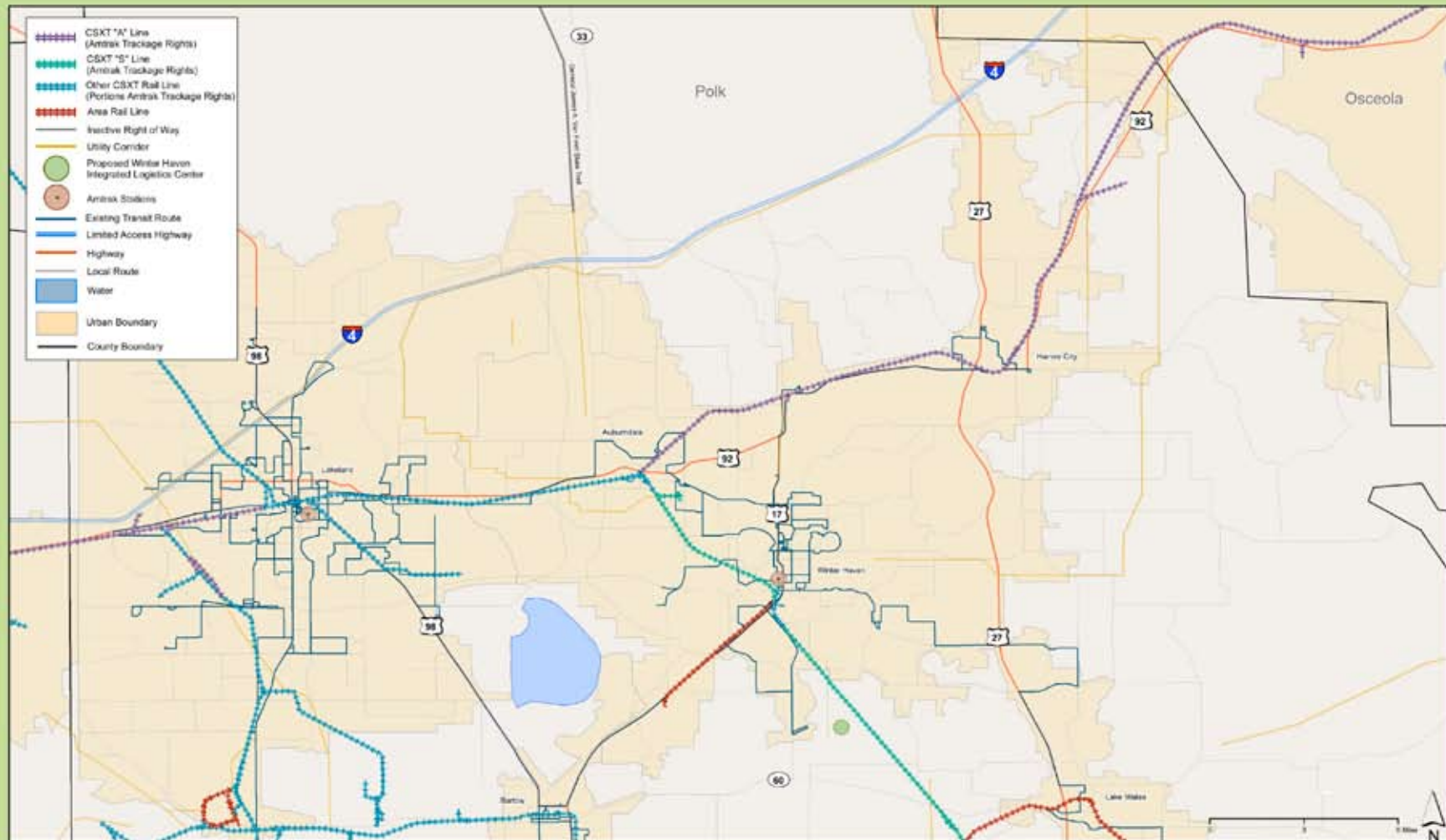
FDOT Rail Traffic Evaluation  
July 2008



# Lakeland Grade Crossing



# Polk County Transportation Corridors With Transit Routes

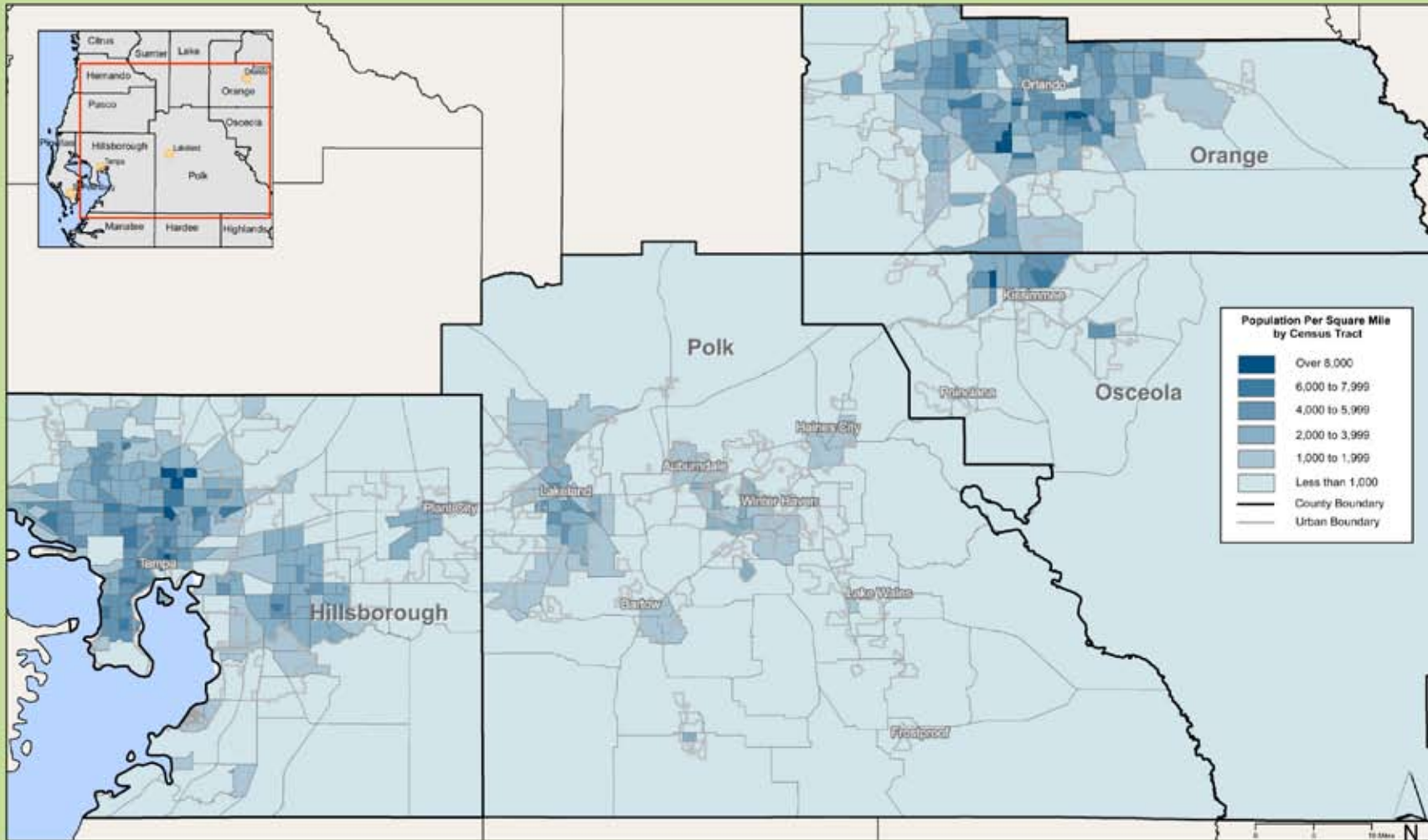


Source: National Rail Network Bureau of Transportation Statistics; FDOT; FDEP; ESRI Data

FDOT Rail Traffic Evaluation  
July 2008



# Population Density of Regional Counties



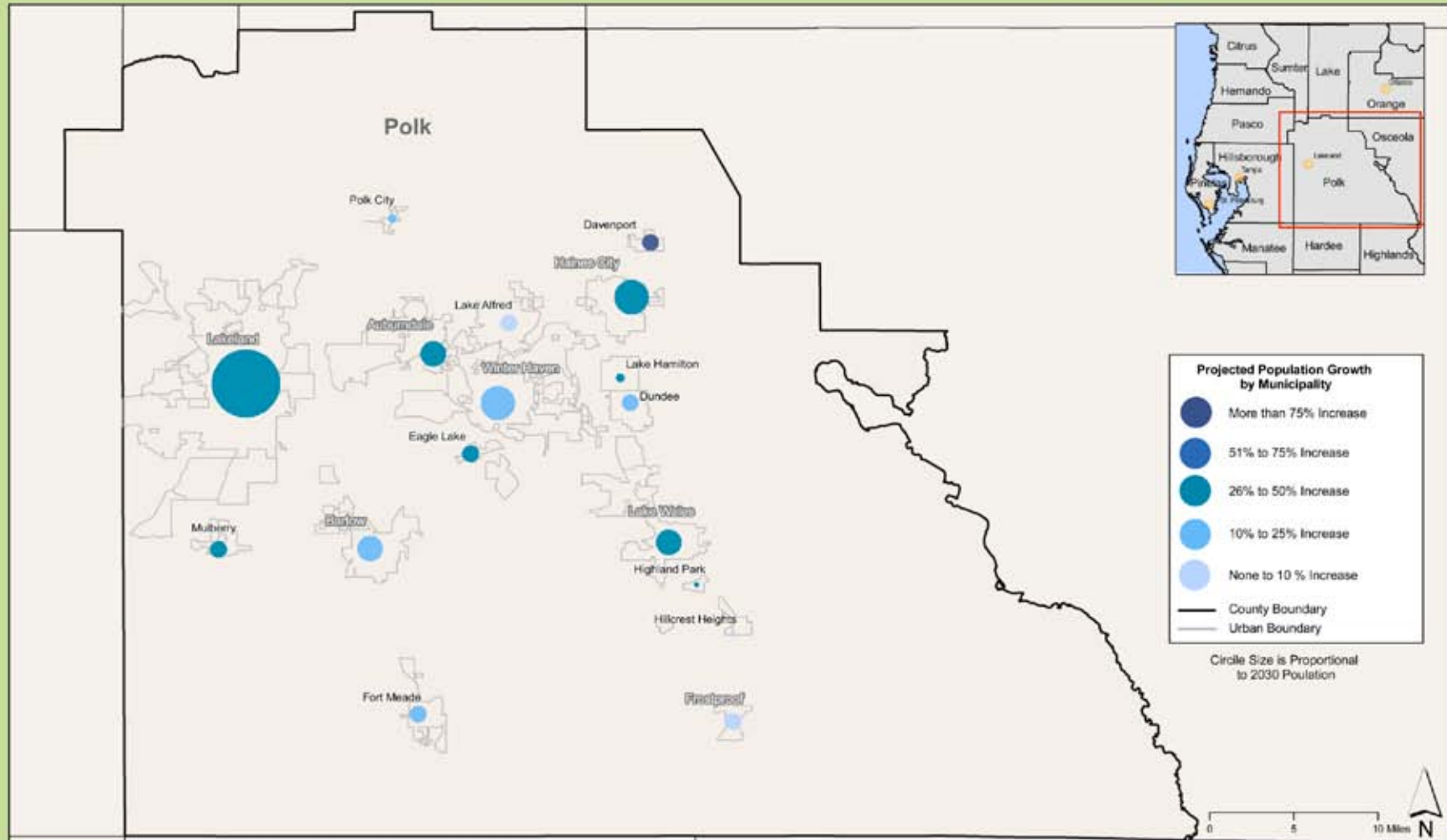
Source: U.S. Census Bureau; ESRI Data

FDOT Rail Traffic Evaluation  
July 2008



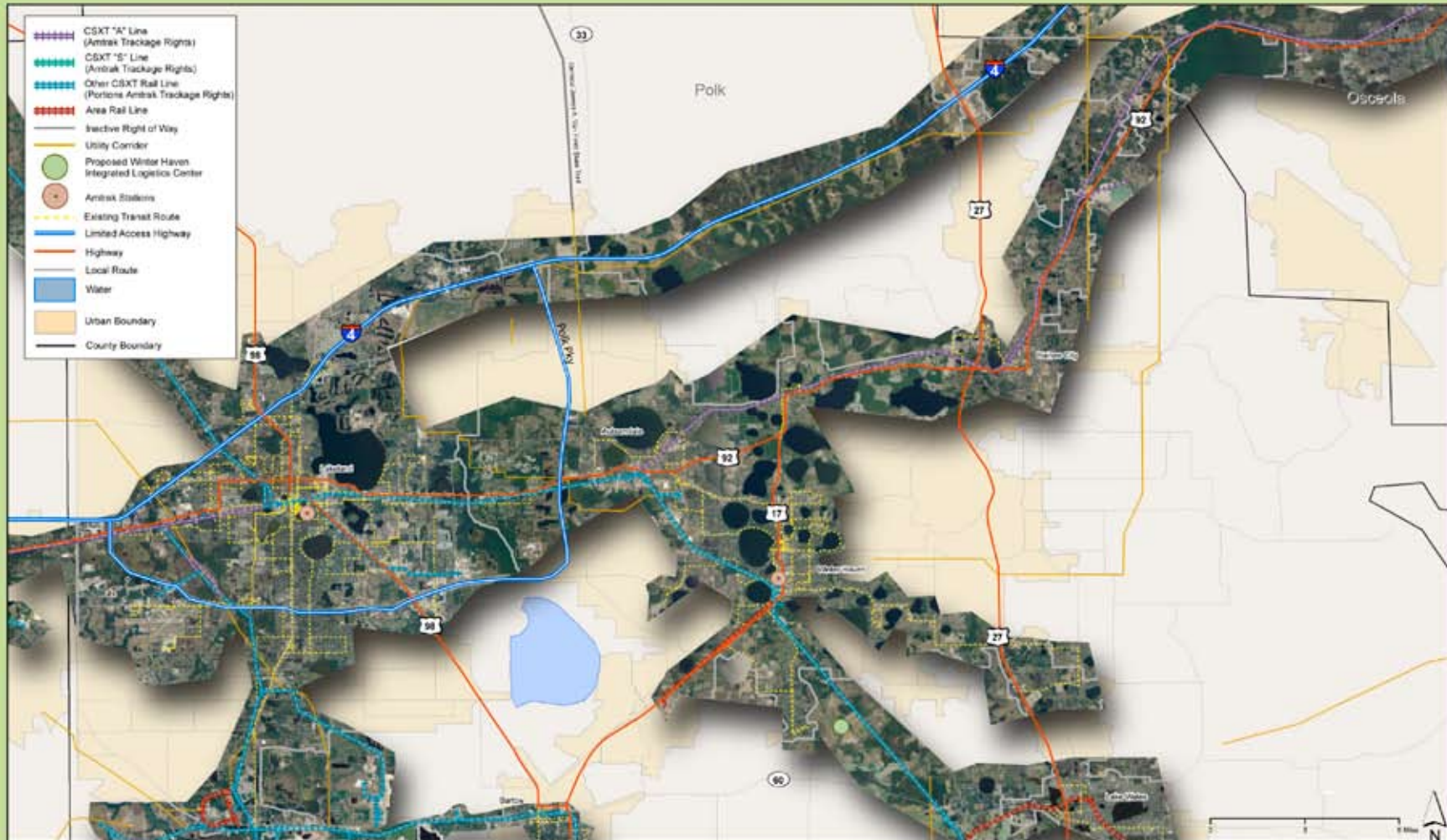


# Projected Population Growth Municipality



Source: U.S. Census Bureau; ESRI Data; University of Florida Florida Housing Data Clearing-

# Polk County Transportation Corridors with Aerial

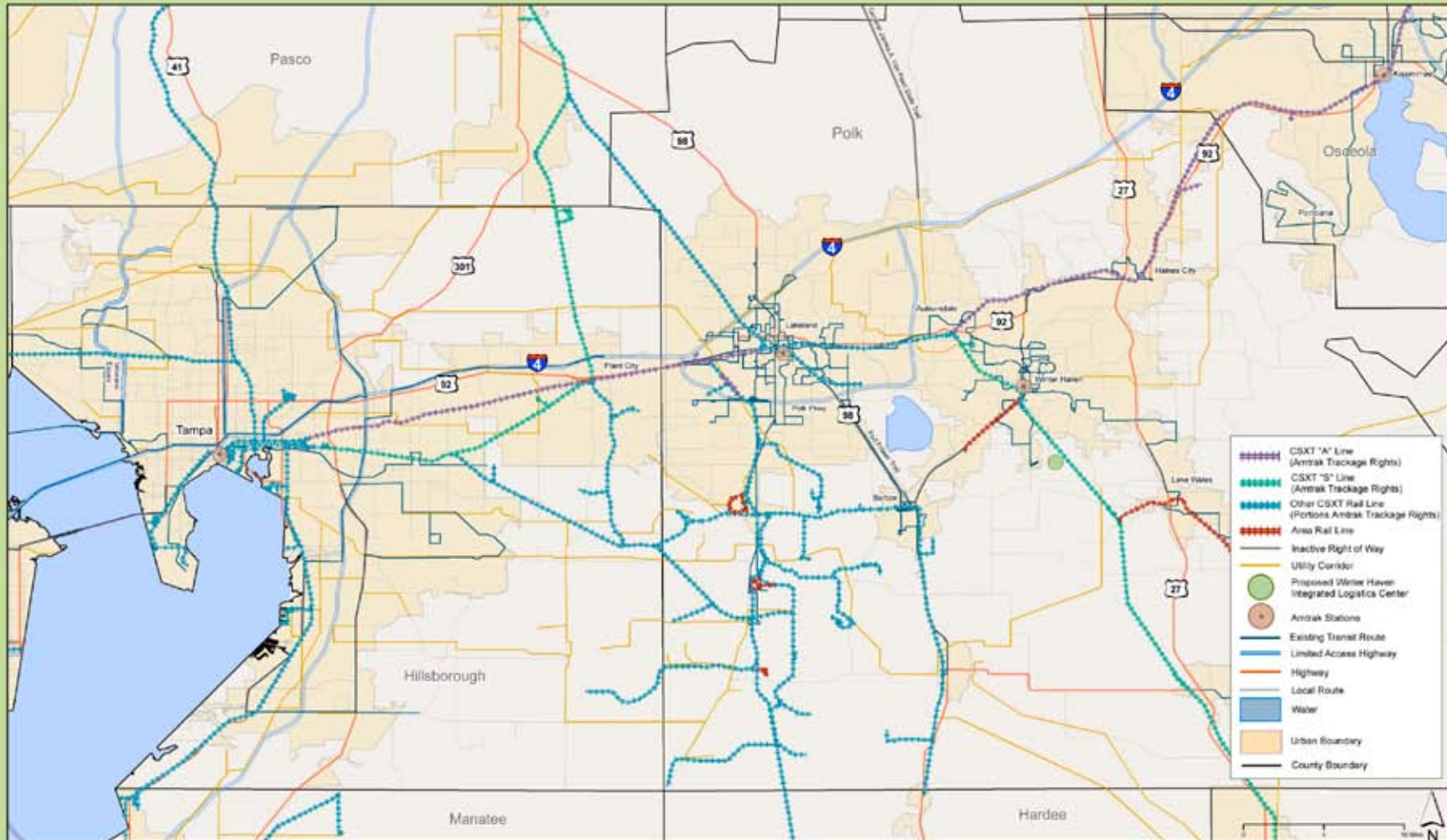


Source: National Rail Network Bureau of Transportation Statistics; FDOT; FDEP; Polk TPO;

FDOT Rail Traffic Evaluation  
July 2008



# Regional Transportation Corridors



Source: National Rail Network Bureau of Transportation Statistics; FDOT; FDEP; ESRI Data

FDOT Rail Traffic Evaluation  
July 2008

